



GAT MONTHLY MEMBERSHIP PROGRESS REPORT

Results as of: 1/31/2021

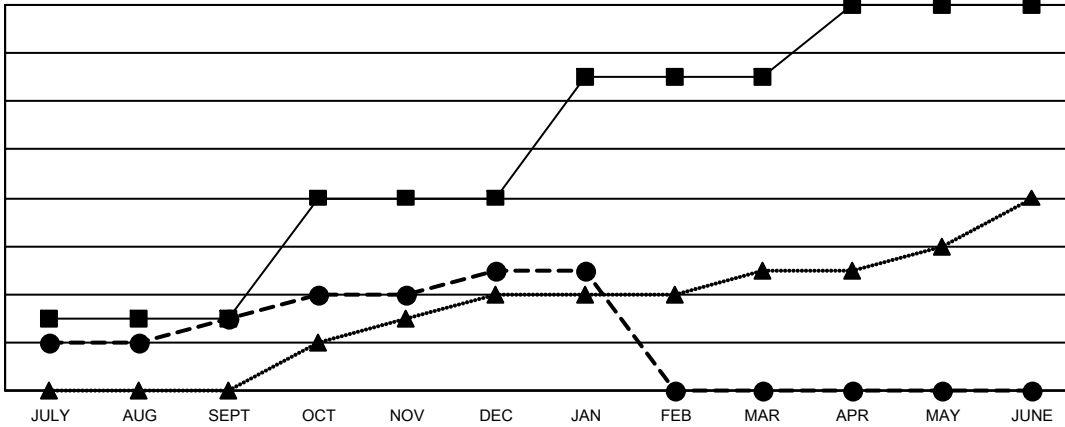
Multiple District 411

LOCATION: KENYA AFRICA

| Clubs | | | |
|-----------------------|---------------|-----------|---------------|
| RESULTS FOR 2020-2021 | | | |
| QUARTER | NEW CLUB GOAL | NEW CLUBS | DROPPED CLUBS |
| JULY/AUG/SEPT | 3 | 3 | 0 |
| OCT/NOV/DEC | 5 | 2 | 0 |
| JAN/FEB/MAR | 5 | 0 | 0 |
| APR/MAY/JUNE | 3 | 0 | 0 |

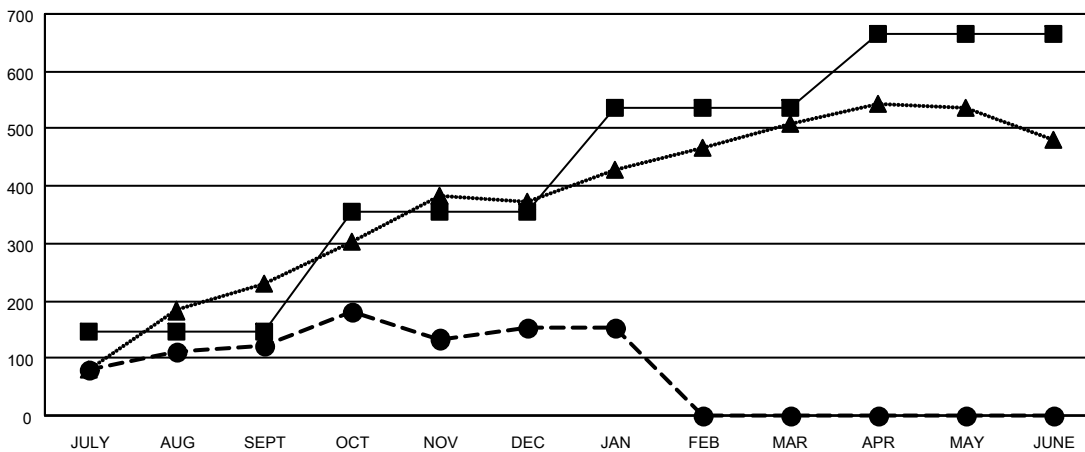
| Members | | | |
|-----------------------|------------------------|----------------------|--|
| RESULTS FOR 2020-2021 | | | |
| QUARTER | MEMBER GROWTH NET GOAL | MEMBER GROWTH ACTUAL | DROPPED MEMBERS ACTUAL (including transfers) |
| JULY/AUG/SEPT | 145 | 233 | 104 |
| OCT/NOV/DEC | 210 | 250 | 212 |
| JAN/FEB/MAR | 180 | 17 | 17 |
| APR/MAY/JUNE | 130 | 0 | 0 |

GOALS AND ACTUAL NEW CLUBS CUMULATIVE



- - CURRENT YEAR GOALS FOR NEW CLUBS
- - CURRENT YEAR ACTUAL NEW CLUBS
- ▲ - LAST YEAR ACTUAL NEW CLUBS

GOALS AND ACTUAL MEMBERS CUMULATIVE



- - MEMBER GROWTH NET GOAL
- - MEMBER GROWTH ACTUAL
- ▲ - LAST YEAR MEMBERSHIP ACTUAL

| | |
|------------------------|------------|
| DROPPED CLUBS: 0 | |
| <u>DROPPED MEMBERS</u> | |
| DECEASED | 20 |
| CLUB CANCELLED | 0 |
| OTHER | 313 |
| TOTAL | 333 |

75 CLUBS OF 132 ADDED 1 OR MORE NEW MEMBERS

| <u>GENDER DISTRIBUTION</u> | |
|----------------------------|----------------|
| MALE | 2,334 (61.81%) |
| FEMALE | 1,442 (38.19%) |

[CLICK HERE FOR CUMULATIVE MEMBERSHIP DATA](#)

| | |
|---------------------------------|-------|
| TOTAL FAMILY UNIT MEMBERS | 1,132 |
| FAMILY MEMBERS PAYING HALF DUES | 682 |